



J-Fall

11 oktober 2007 Spant! - Bussum



## Eclipse Mylyn

Peter Hendriks



Speaker



- Peter Hendriks
  - Java developer
  - Member of CC Java / Endeavour
  - NLJUG University speaker
  - <http://blogs.infosupport.com/peterhe/>



## Agenda

- History
- Overview
- Demo
- Future
- Q & A



## History of Mylyn

- Started in 2003 by Mik Kersten
- PhD at IBM on improving productivity
- At Eclipse.org in 2005
- Promoted to “tools” project in Eclipse Europa
- <http://kerstens.org/mik/publications.html>

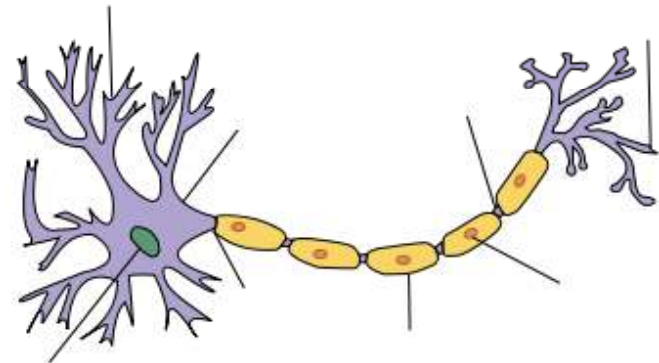


## Formerly known as Mylar

- Possible TM conflict



Mylar



Myelin



## Task focused UI

- Mylyn provides
  - Task Management integration
  - Task Planning
  - Task Context
  - Task Extension Platform



## Task Management integration

- Integrate task management in Eclipse IDE
  - Bugs, tickets, issues, work items etc...
  - Stay in the IDE
  - Hyperlinking and advanced actions
  - Rich online/offline/synch



# Task Management Screens

Task List

Find:

- Uncategorized
- All Mylyn bugs [Eclipse.org]
  - 125433: improve modularity of bugzilla
  - 203626: NPE when creating new jira repository**
  - 110957: Crashes, slowness in XML o
  - 163247: unexpected selection in Pac
  - 165389: provide web service wrappe
  - 103594: make query categories wor

192308: disable prev | 203626: NPE when cre

Bug 203626 | Eclipse.org

NPE when creating new jira repository

Status: RESOLVED | Priority: P1 | ID: 203626 | Opened: 2007-09-17 13:41 | Modified: 2007-10-11 10:41

Attributes

Attachments (1)

Description

Try to create new jira repository on the clean workspace.  
It seems like regression introduced with recent refactorings:

```
java.lang.NullPointerException
    at org.eclipse.mylyn.internal.jira.ui.JiraUtils.getCharacterEncodingValidated(JiraUtils.java:112)
    at org.eclipse.mylyn.internal.jira.ui.wizards.JiraRepositorySettingsPage.createAdditionalComponents(JiraRepositorySettingsPage.java:78)
    at org.eclipse.mylyn.tasks.ui.wizards.AbstractRepositorySettingsPage.createControl(AbstractRepositorySettingsPage.java:431)
    at org.eclipse.jface.wizard.WizardDialog.updateForPage(WizardDialog.java:1147)
    at org.eclipse.jface.wizard.WizardDialog.access$2(WizardDialog.java:1139)
    at org.eclipse.jface.wizard.WizardDialog.run(WizardDialog.java:1128)
```

Planning | Bugzilla | Context



## Compatibility

- Local Tasks store
  - Low ceremony, experimenting
- Connectors task systems
  - Bugzilla, JIRA, Trac, XPlanner
  - Generic Web connector (regex html scraping)
  - Lots of third party support



## Task planning

- Personal planning and estimates
  - Workweek focus

The screenshot shows a web browser window with a single tab titled "Fix the nullpointer in BagUtils". The main content area displays a task card for "Task: Fix the nullpointer in BagUtils".

Task details:

- Task name: Fix the nullpointer in BagUtils
- Priority: Normal
- Status: Complete
- Created: 5 oktober 2007
- Completed: 5 oktober 2007
- URL: (empty field)

Personal Planning section:

- Scheduled for: 5-okt-2007 18:00
- Due: <choose date>
- Estimated hours: 1
- Active: 17 minutes 30 seconds
- Refresh button

Notes section:

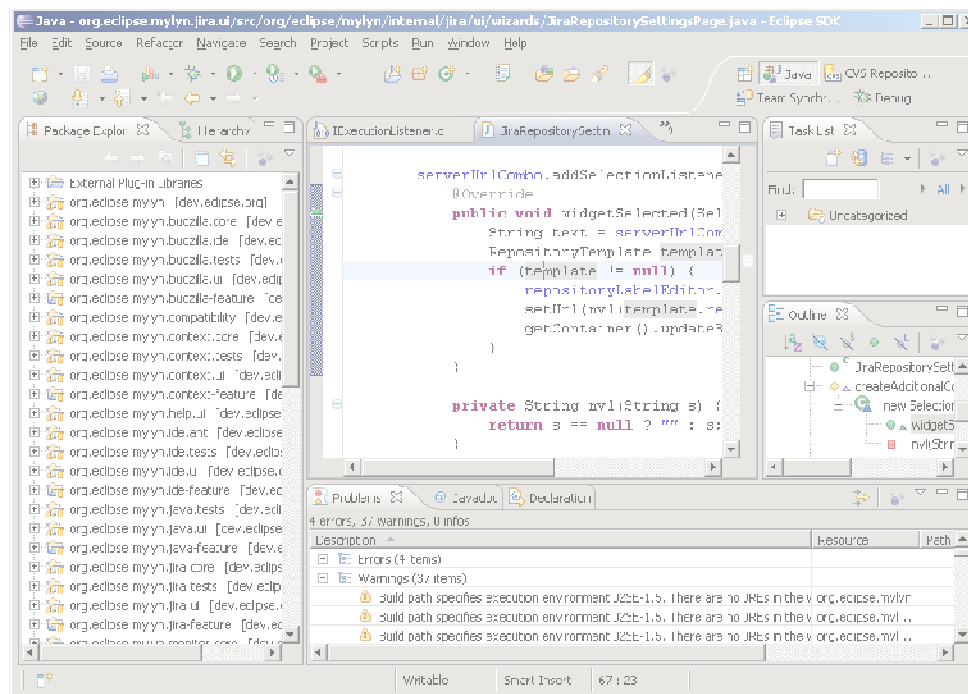
- Do a search on <http://www.google.nl>.

At the bottom, there are two tabs: "Planning" (selected) and "Context".



## Task Context

- IDE traditionally does not provide much focus



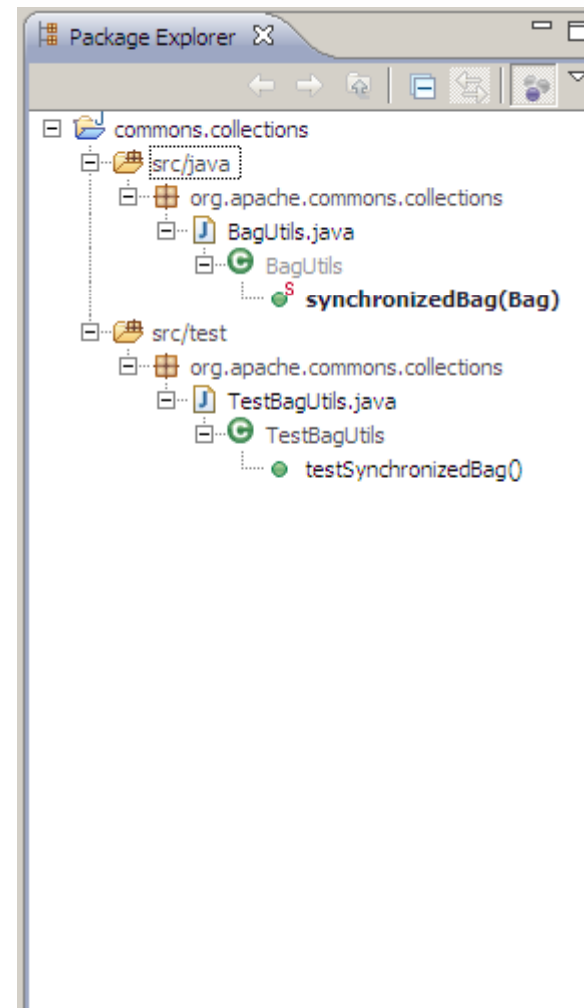
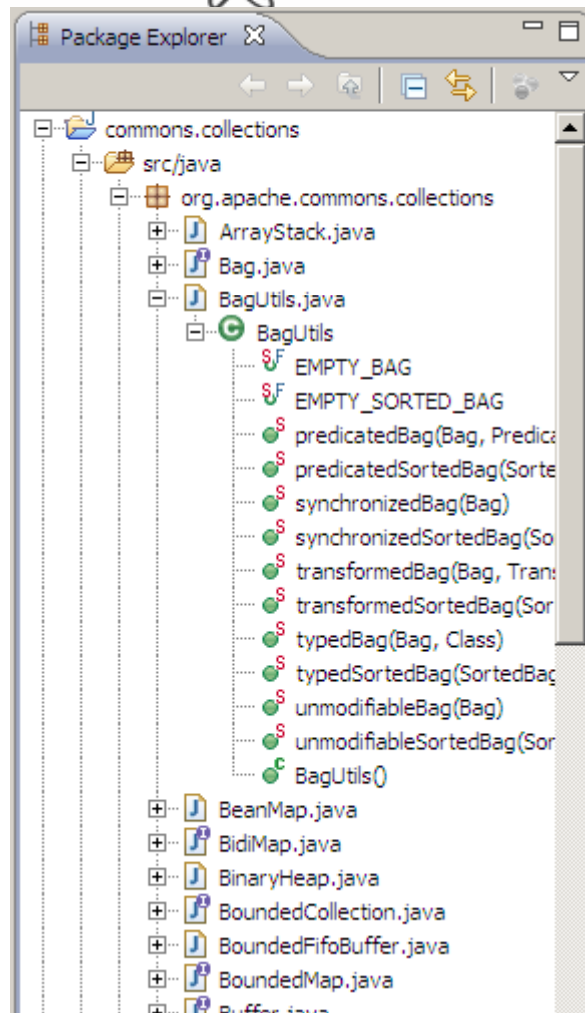


## Mylyn to the rescue

- Mylyn keeps track of what you do
  - By monitoring where you click and type
  - Linked to a specific task
  - Automagic but can be tweaked if needed



# Context filtering example



.nl.  
jug



## Demo

- Demonstation (Eclipse **3.3.1** Mylyn **2.1**)

.nl.  
jug



## Future

- Mylyn 3.0 in Eclipse “Ganymede”
  - Improved people representation
  - Headless use
  - Composite task contexts
  - Improved refactoring support
- Staged releases
  - Mylyn 2.2: 19-12-2007

.nl.  
jug



Q & A





## Get your Vitamin-J!

- Visit the Info Support stand
  - Get the Labs CD

